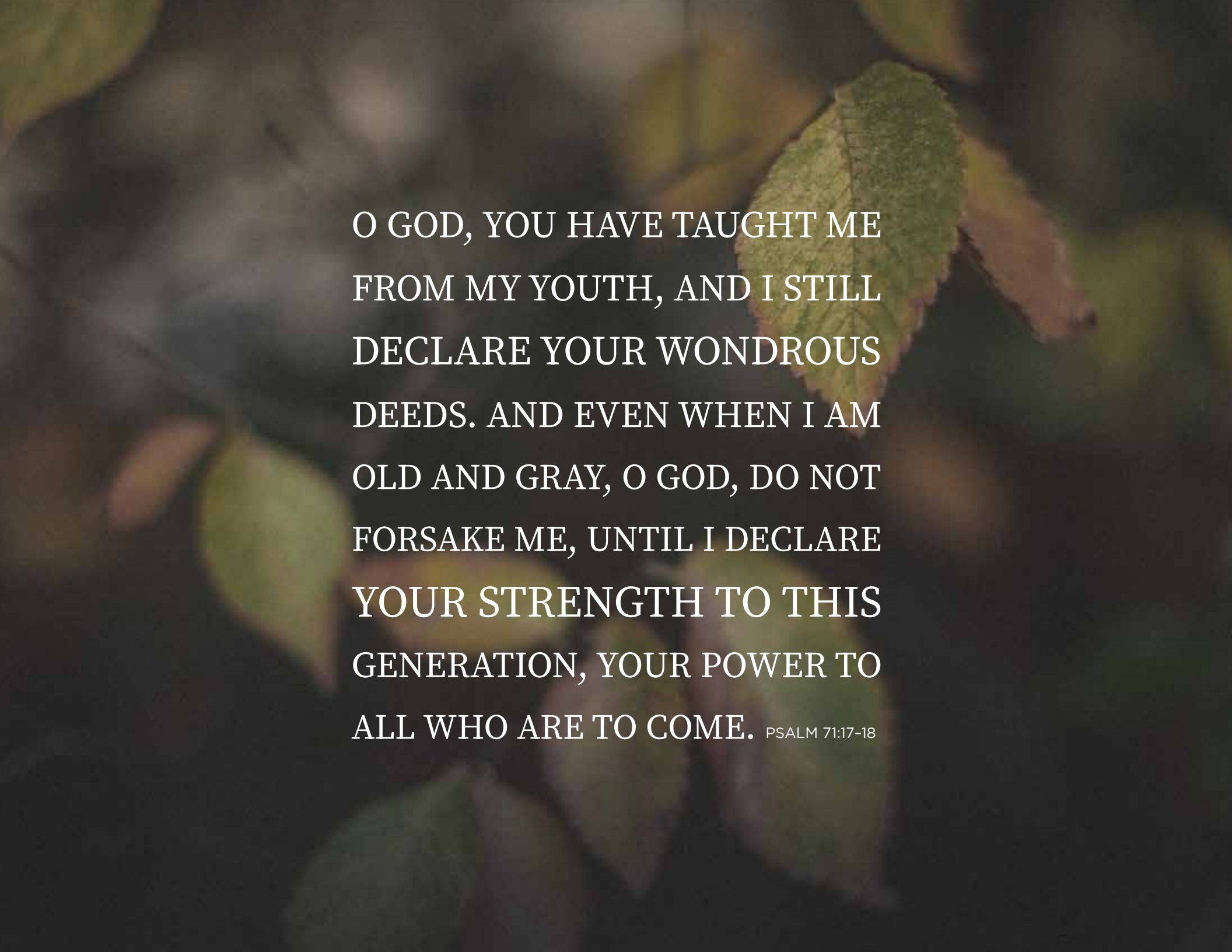




CULTIVATE

TO STRENGTHEN
THIS GENERATION
AND GROW THE
NEXT GENERATION
INTO A DEEP, ABIDING
RELATIONSHIP WITH
JESUS CHRIST



O GOD, YOU HAVE TAUGHT ME
FROM MY YOUTH, AND I STILL
DECLARE YOUR WONDROUS
DEEDS. AND EVEN WHEN I AM
OLD AND GRAY, O GOD, DO NOT
FORSAKE ME, UNTIL I DECLARE
YOUR STRENGTH TO THIS
GENERATION, YOUR POWER TO
ALL WHO ARE TO COME. PSALM 71:17-18



THE WELL

“By God’s grace, we will continue to be a city on a hill in the Central Valley of California.”

Brad Bell
LEAD PASTOR

In 2021, three years after launching our Cultivate campaign, The Well Community Church began its first phase of construction on a 50-acre spiritual training and community center. In that time, we experienced a vastly growing church body faithfully embracing prayer, service, and financial sacrifice, while drawing closer together as we pursued a shared vision for reaching our city for Christ.

After 20 years of faithful ministry, our rally cry to reach people for Christ does not cease with the walls of any building. Instead, it grows louder. While we acknowledge His faithfulness, we recognize there is still much to be done. We must continue to train and equip followers of Jesus to live on mission and lovingly seek after those in need. We believe the gospel is the only lasting, life-giving answer, and we desire to move people into a deep and abiding relationship with Jesus Christ. Yet we face tremendous challenges:

- Much of our culture is rejecting God and biblical morality, having a distorted view of godliness
- Nearly half of all Americans who accept Jesus Christ as their Savior do so before reaching the age of 13 (43%), and two out of three born again Christians (64%) made that commitment to Christ before their 18th birthday [1]
- Limited capacity hinders the ability to reach new people for Christ
- Having grown by 400% over three years, less-than-optimal facilities hinder the future of our Student Ministries

Our responsibility as a community is to respond to God and say yes to what He is doing. We can plant and we can water, but God is the one who causes the growth – and when He is growing your church, you have to respond. While we have taken a historic first step, we are called by Him to continue to step out by faith into our city. The needs in our community require us to press on and our best days are still ahead.

We enter into a new season of Cultivate with 3 more goals in 3 years.

[1] <https://www.barna.com/research/evangelism-is-most-effective-among-kids/>



THE FIRST FRUIT

CITY CENTER

The First Fruit of half a million dollars will be used in a strategic partnership with Fresno Mission to establish a church in City Center that will help support holistic ministry for the most vulnerable in our community.

City Center, the former site of the Sierra Hospital Complex, and the precise center intersection of Fresno, will be a shared campus on over eight acres, bringing together more than 20 different organizations and ministries, and providing the best our community has to offer for the most vulnerable in our city.

“We want more than anything to reflect the heart of Christ, providing the hope of the gospel, as well as dignity for those in crisis – and it’s not done by building the nicest place for a homeless person, or the nicest school or restaurant for a poor person, but rather by building the nicest place for anyone. What does the love of Jesus look like in a property? It looks like the best playground. The best tech hub. The best coffee shop. And by doing this together, we will advance the gospel in ways our city has never seen.”

Matt Dildine
CEO FRESNO MISSION

Our long-standing relationship with Fresno Mission has created an incredible opportunity to establish a church at City Center. Relocating several of our staff to facilitate the ministry needs of this new church in the heart of the city allows The Well to further its mission of reaching people in every neighborhood. This church home will ensure the faithful proclamation of the Word of God through weekly church services, pastoral care, on-campus mentoring, and neighborhood outreach.



CITY CENTER





RENOVATION

THE FIG GARDEN CAMPUS

We will continue to modernize our facilities to meet the growing needs in our Fig Garden community.



In 2019, as renovation began on our kids' buildings, a span of generations, old and young alike, wrote verses and prayers on the exposed studs, expressing, *Lord, we want to see this place used for your glory, and we want you to do something special here.* Years later, we have seen the tremendous blessing and benefit of reinvesting God's resources into the ministries He has chosen to grow.

We saw upwards of 20% growth in Kids Ministries with the modernization and expansion of our Early Childhood and Elementary wings. At the same time, adult attendance grew and our Spanish-speaking ministry, La Fuente, doubled. More than 200 kids, 80 students and 400 adults are in weekly attendance.

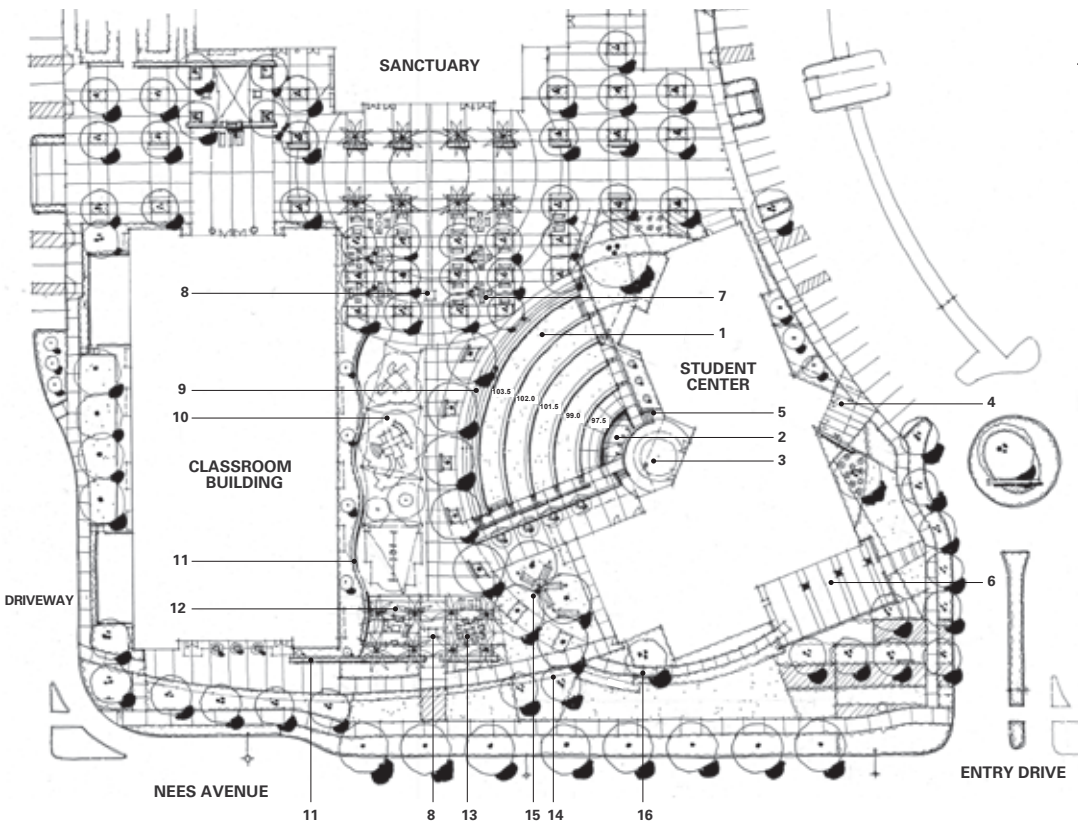
Embracing the history and beauty unique to our Fig Garden Campus, marked by stained glass windows and traditional wooden pews, we will continue to modernize facilities as a whole to help optimize our worship and fellowship experience.

STUDENT CENTER

THE CLOVIS CAMPUS

We will expand our multi-use spiritual training and community center with 25,000 square feet of dedicated student facilities adjacent to over 5,500 students at Buchanan Educational Center.





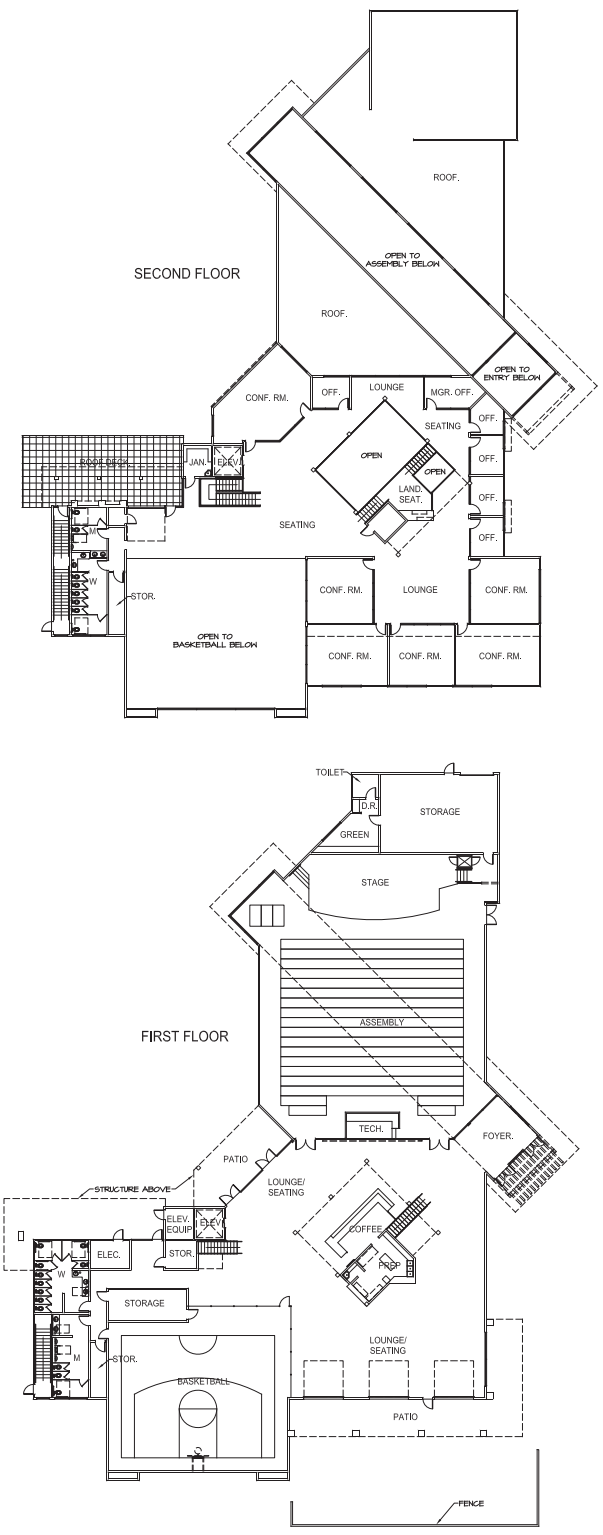
LEGEND

- 1 AMPHITHEATER TERRACE WITH CAST-IN-PLACE SEAT WALLS AND SYNTHETIC TURF
- 2 BAPTISMAL / FOUNTAIN
- 3 STAGE (100.0 F.S.)
- 4 BUILDING ENTRY
- 5 STEPS (97.5 F.S.)
- 6 OUTDOOR PATIO
- 7 OLIVE GROVE WITH FIRE PITS
- 8 "EBENEZER" STONE MONUMENT
- 9 (3) 14" AMPHITHEATER STEPS
- 10 PLAY AREA WITH SHADE SAILS
- 11 CAST-IN-PLACE CONCRETE SEAT WALL
- 12 PALM GROVE WITH SEATING
- 13 FIRE PIT SEATING
- 14 6' HT. TUBULAR STEEL FENCE
- 15 HAMMOCK GROVE WITH SYNTHETIC TURF
- 16 PEDESTRIAN GATE



God is aggressively moving in our Student Ministries, having grown by 400% in three years, and we must be prepared to meet the basic needs of our young people. Students are experiencing isolation, despair, division, and confusion - a barrage of sin and suffering - and they hunger for a resting place where they can find authenticity, truth, and light in the depravity.

During the past three years, over 1,000 middle and high school students engaged in discipleship environments, averaging over 375 in weekly attendance, and our Student Ministries grew four-fold.



Student leadership and cohorts have doubled, while over 600 students collectively attended Mount Hermon and Hume Lake Christian Camps. Over 400 students served our local community during I Heart Fresno and with our global partners overseas on Exposure Trip teams. Our development of student leaders is stronger than ever, with over 100 serving in various ministries throughout the church.

“They will tolerate swamp coolers and dust to have a physical place to meet. They wish for a place that is theirs to call their own.”

Ka'eo Yoshikawa
STUDENT MINISTRIES YOUTH PASTOR

The invitation is, and has always been, to come as you are. Yet we must be willing to take the steps of faith required to ensure we don't stay that way. Providing what the world cannot, we must be louder and pursue relentlessly. We must also create appropriate space for those who are already showing up and finding the hope, unity and peace that only come through Jesus Christ.

Proposed 25,000 square feet of dedicated student facilities will include a 500-seat venue, an outdoor amphitheater, indoor full-size half-court basketball, Student Ministry offices, small group and community spaces, outdoor deck with fireplaces, coffee bar, and baptismal and water features.

“We have a responsibility to allow for growth. How can we turn a student away due to a lack of adequate space? We are not building a student center in hopes that they will come. We are building a student center because they are already coming!”

Brad Bell
LEAD PASTOR





In 2002, our church began with 40 college students huddled in a living room, and by God's grace and goodness, the now multisite, multigenerational movement has reached thousands.

After two decades of faithful ministry, this is just the beginning.

The new season of Cultivate will once again ask each of us to step out in faith, giving above and beyond, with genuine sacrifice, to respond to the most significant kingdom investment in the history of The Well. This effort demands full participation from our entire church, giving with joy, in a manner pleasing to the Lord – not giving equal gifts but gifts of equal sacrifice.

Buildings are hubs, gathering spaces, rallying points for the proclamation of Christ. They are a means to an end – and our mission remains the same. We are in the city for the city, and Lord willing, He will continue to use us to reach the multitudes with the hope of the gospel.



CULTIVATE



THE WELL

THEWELLCOMMUNITY.ORG • 559.326.5100 • 2044 E NEES AVE, FRESNO, CA 93720